

My Dashboard

Latest month (Dec 2015)

▲ Your data is not up-to-date. YTD and MAT figures are calculated to 31 Dec 2015

# CASES 1024	# HORSES SEEN 746	AVG. FEE / CASE £87.57	INVOICED MTH £89,672.19 <small>CREDITS £-2,574.31</small>	YTD £1,253,660.68 <small>CREDITS £-66,379.39</small>	MAT £1,253,660.68 <small>CREDITS £-66,379.39</small>
------------------------	-----------------------------	----------------------------------	--	---	---

Current staff: Vets: 6.8 / RVNs: 4.2 / ANAs: 2.0 / Managers: 1.0 / Receptionists: 2.0 / Student nurses: 1.0

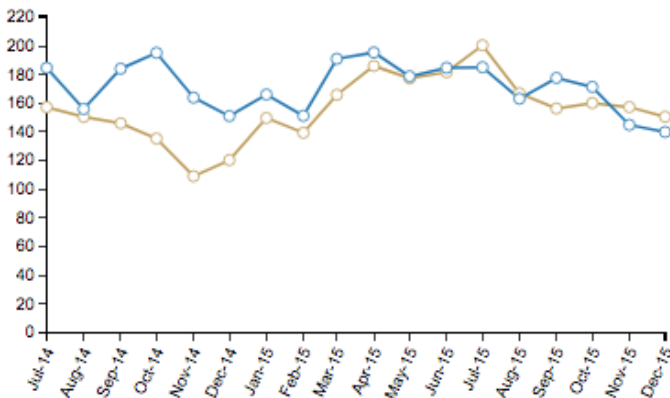
[Update Staff](#)

[Update Coding](#)

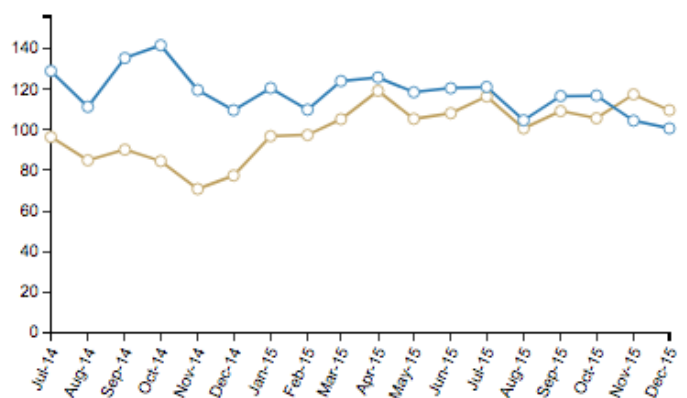
Trends from Jul 2014 - Dec 2015

— Your practice — Average

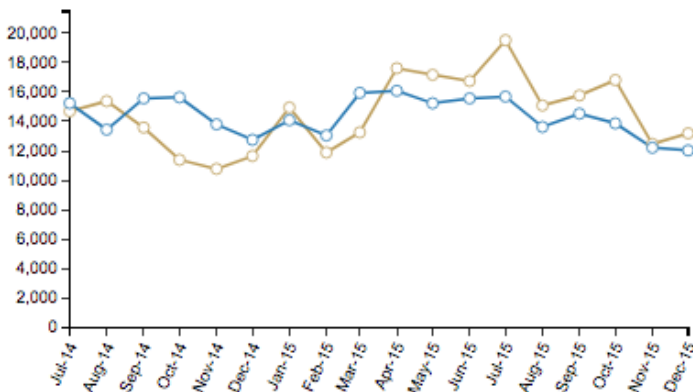
Cases per vet



Horses per vet



Income per vet (£)



Average fee per case (£)

